

# ALUS PARTNERSHIPS IN THE COUNTY OF VERMILION RIVER



## NSWA Know-vember Speaker Series

Presented by Chris Elder  
ALUS Program Coordinator  
County of Vermilion River

November 17, 2020



# OUTLINE

- What is ALUS?
- ALUS Partnerships
- ALUS Project Collaborations
- Other Projects

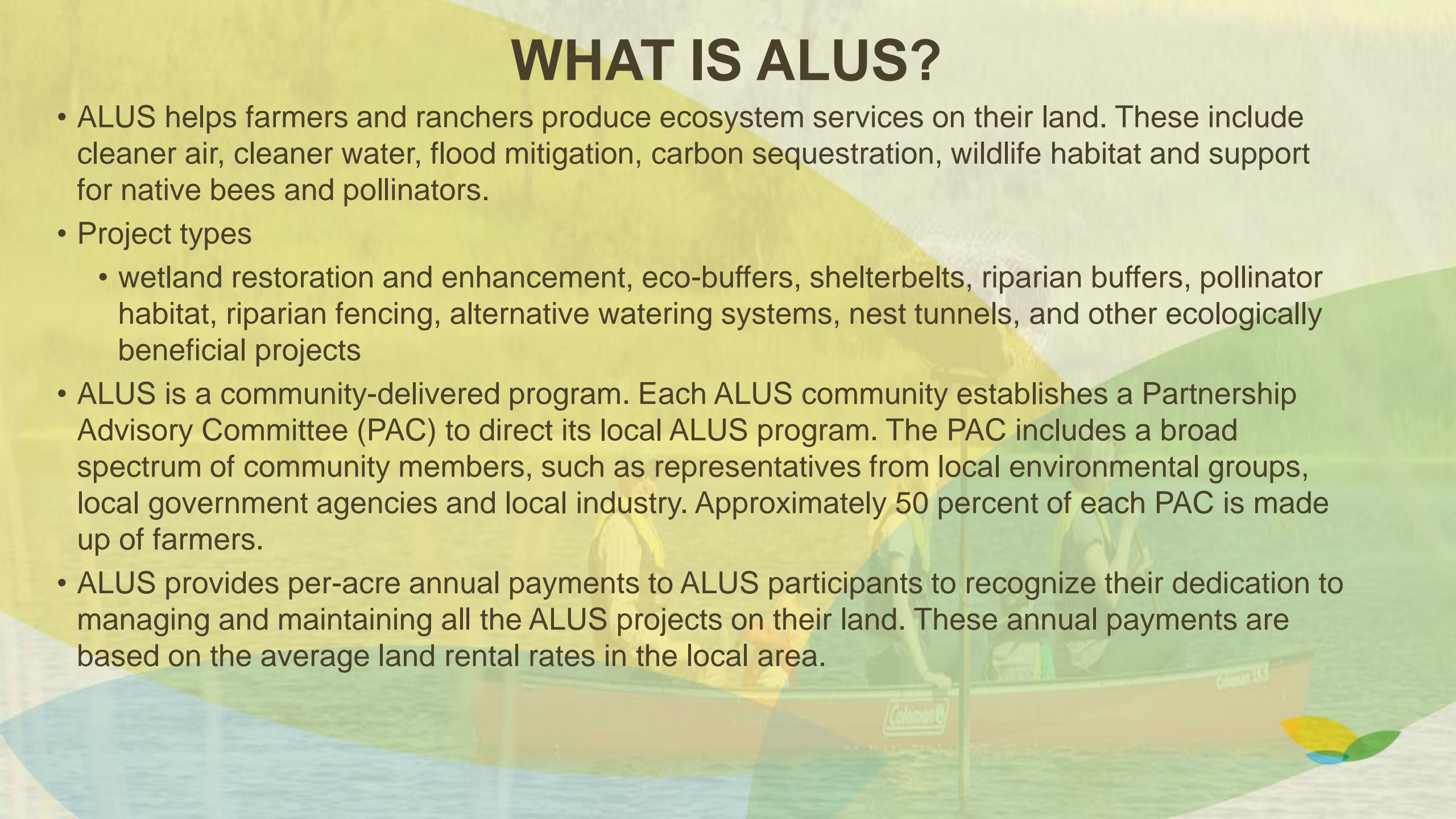


[https://vermilion-river.com/living\\_here/ag\\_and\\_environment/alus.html](https://vermilion-river.com/living_here/ag_and_environment/alus.html)



# WHAT IS ALUS?

- ALUS helps farmers and ranchers produce ecosystem services on their land. These include cleaner air, cleaner water, flood mitigation, carbon sequestration, wildlife habitat and support for native bees and pollinators.
- Project types
  - wetland restoration and enhancement, eco-buffers, shelterbelts, riparian buffers, pollinator habitat, riparian fencing, alternative watering systems, nest tunnels, and other ecologically beneficial projects
- ALUS is a community-delivered program. Each ALUS community establishes a Partnership Advisory Committee (PAC) to direct its local ALUS program. The PAC includes a broad spectrum of community members, such as representatives from local environmental groups, local government agencies and local industry. Approximately 50 percent of each PAC is made up of farmers.
- ALUS provides per-acre annual payments to ALUS participants to recognize their dedication to managing and maintaining all the ALUS projects on their land. These annual payments are based on the average land rental rates in the local area.

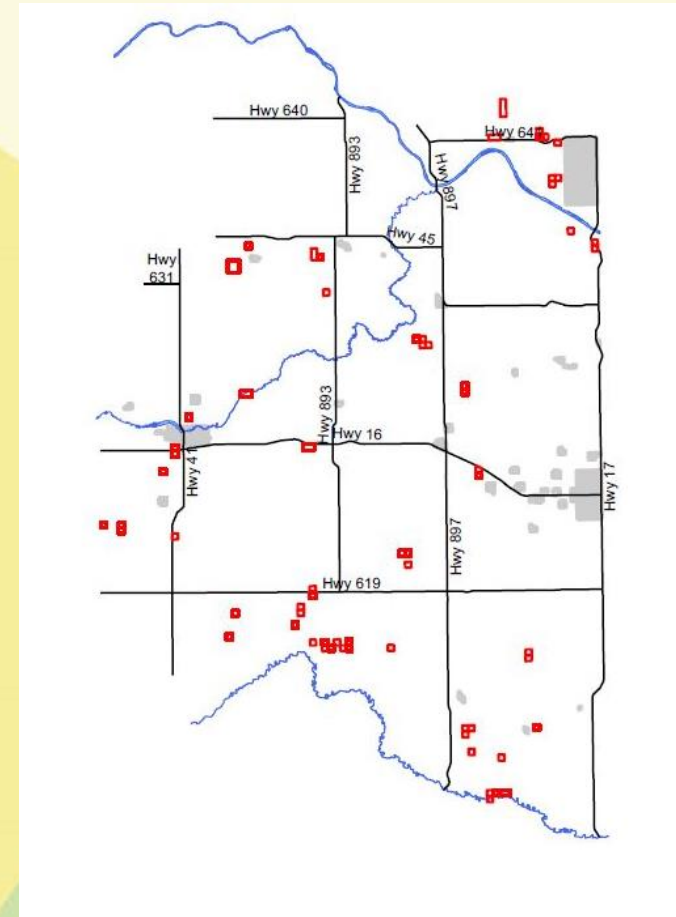


# ALUS IN ALBERTA



- 15 Programs
- 6 in NSWA

# ALUS IN VERMILION RIVER



- 41 Participants
- 56 Agreements
- 3290 Acres



# ALUS PARTNERSHIPS

## Administration



Partnership Advisory  
Committee (PAC)

## Producers



## Project Funding



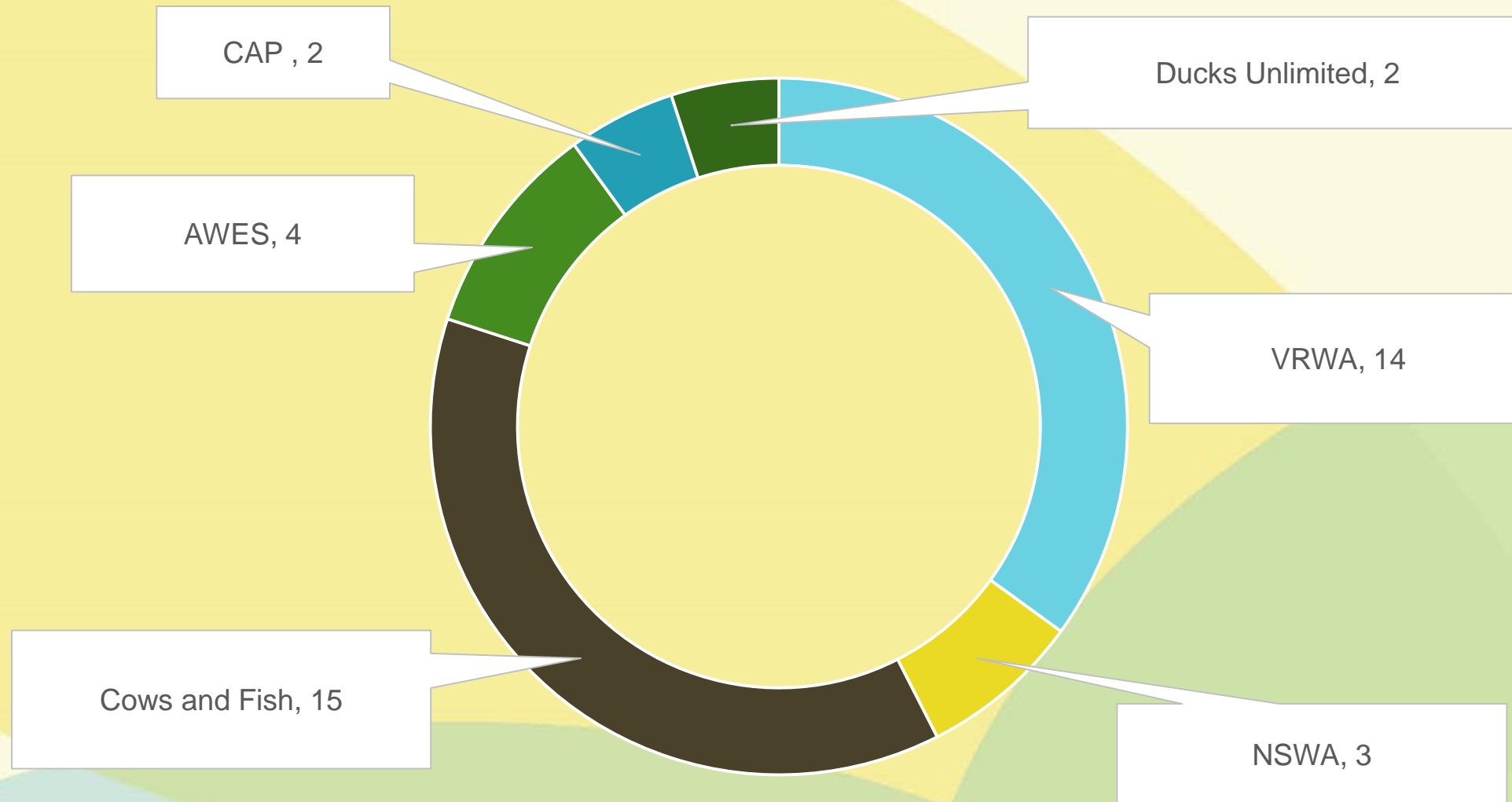
## Project Partners



## Program Support



# ALUS PROJECT COLLABORATIONS



County of Vermilion River 2010-2020



# ALUS, VRWA



- ALUS contact
- 6.2 acres
- Seasonal wetland
- Wildlife friendly fencing
- Natural rest and recovery
- May consider willow planting in future







2016



2019







2016

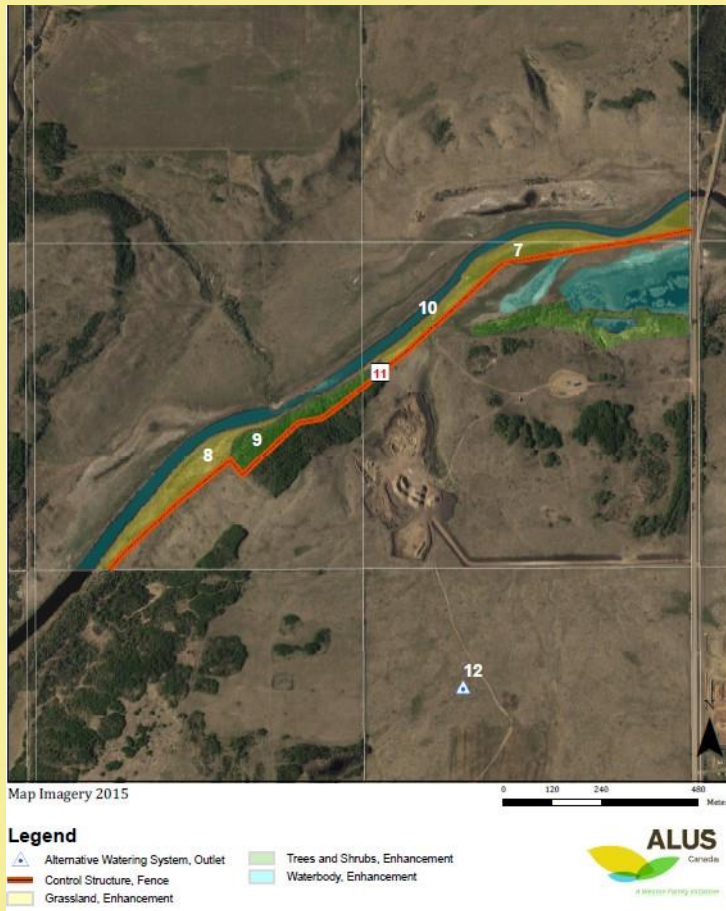


2019





# VRWA, ALUS, Cows and Fish



- VRWA contact
- 33.2 acres
- Pasture along Vermilion River
- Riparian fencing
- Off-site watering system
- Riparian Health Inventory
- Natural rest and recovery
- Evaluate further action after 5 years







May 2017



April 2020







2017



2017







2017



2018







2017



2018







2017

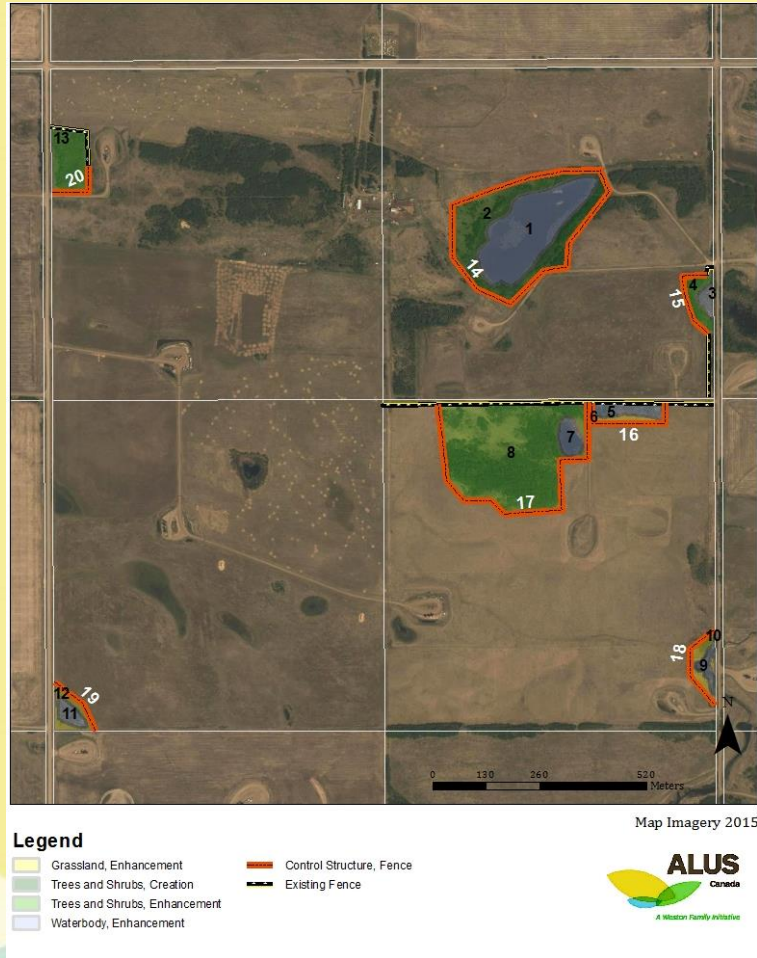


2018





# AWES, VRWA, ALUS, Cows and Fish, CVR Sustainable Agriculture



- AWES contact
- 49.8 acres
- Several wetlands and wooded areas
- Riparian fencing
- 3600 tree and shrub seedlings
- Riparian Health Inventory
- Sustainable grazing management







2017



2018







2018



2018







2017



2018







2017

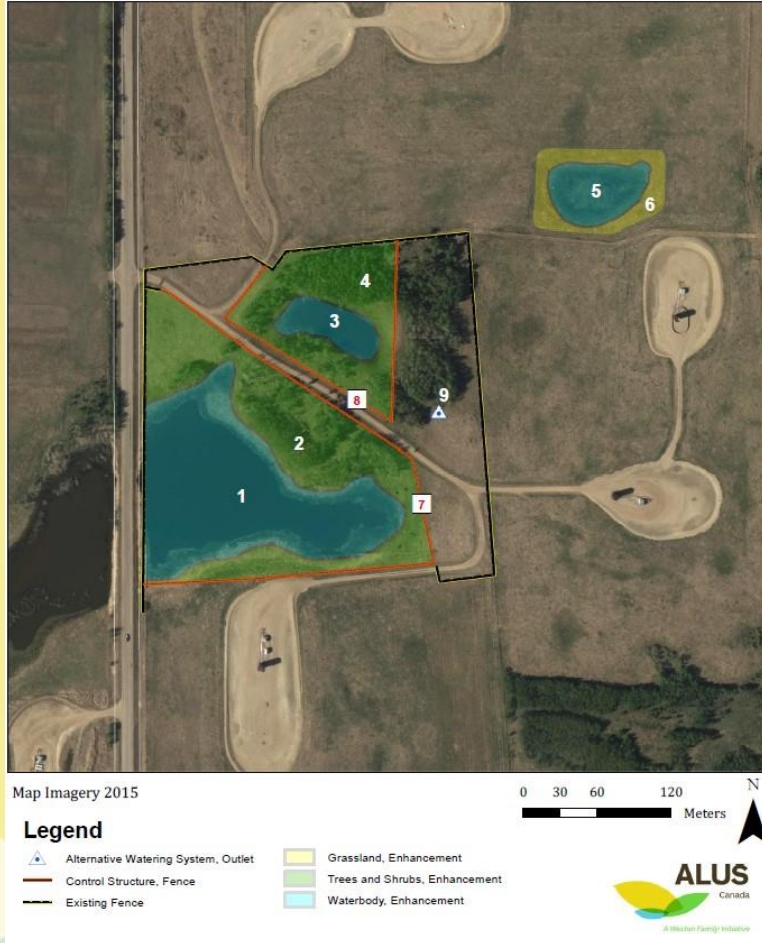


2018





# ALUS, Lakeland College, VRWA, Cows and Fish



- ALUS contact
- 57.4 acres
- Wetlands
- Native seeding
- Tree planting
- Riparian fencing
- Portable solar watering
- Riparian Health Inventory
- Student Managed Farm and Environmental Sciences



2018 Project







2015



2019







2015



2019







Steel post wildlife friendly



Traditional wildlife friendly





# OTHER PROJECTS



Habitat rehabilitation



Grassed waterways



Beaver flow devices



Eco-buffers



Grassed field approaches



Native prairie seeding



# THANK YOU



[https://vermilion-river.com/living\\_here/ag\\_and\\_environment/alus.html](https://vermilion-river.com/living_here/ag_and_environment/alus.html)

Chris Elder  
ALUS Program Coordinator, County of Vermilion River  
780-846-2244  
[celder@county24.com](mailto:celder@county24.com)  
[alus.ca](http://alus.ca)

