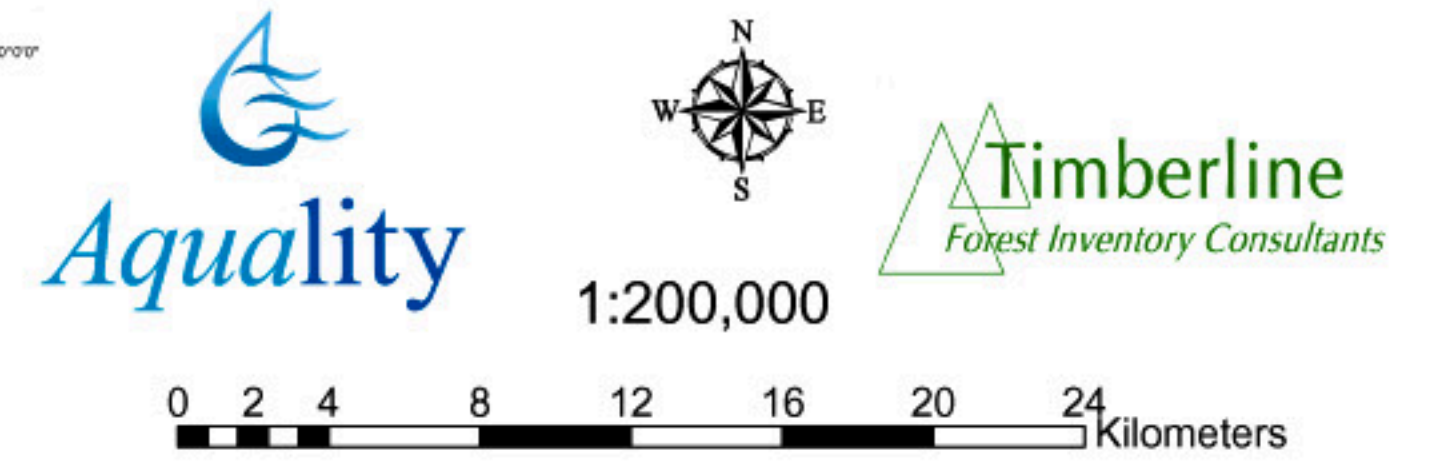
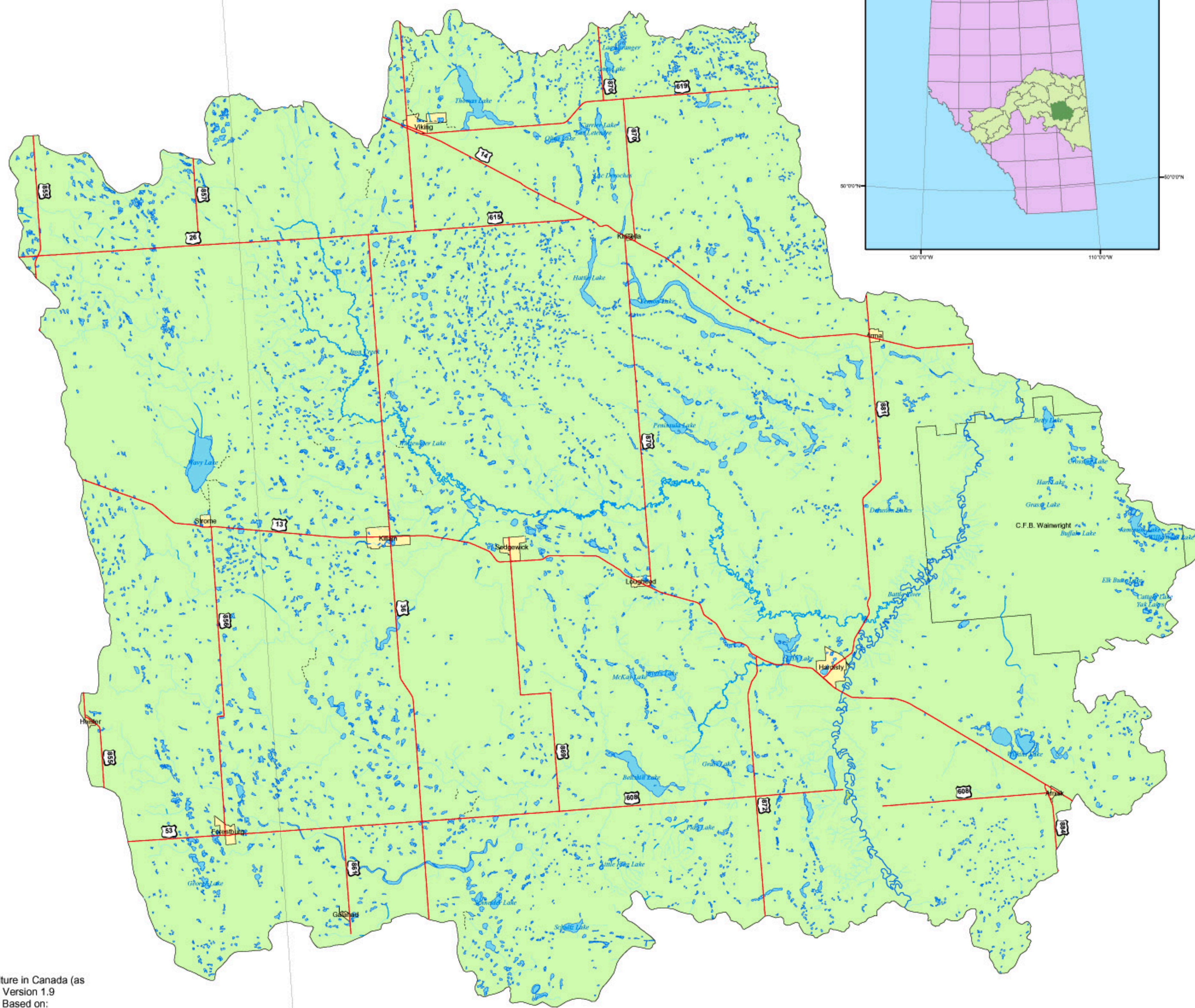
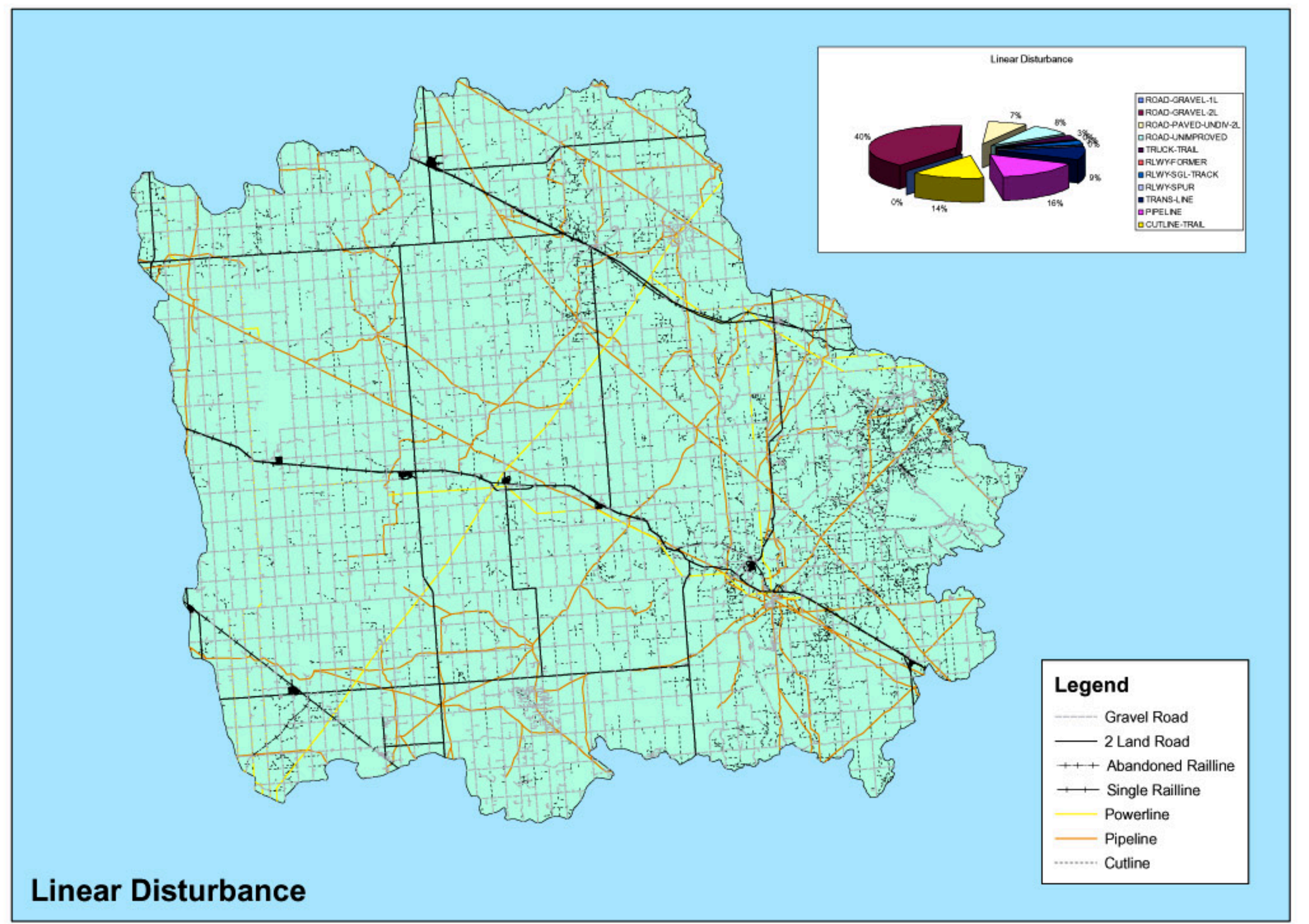
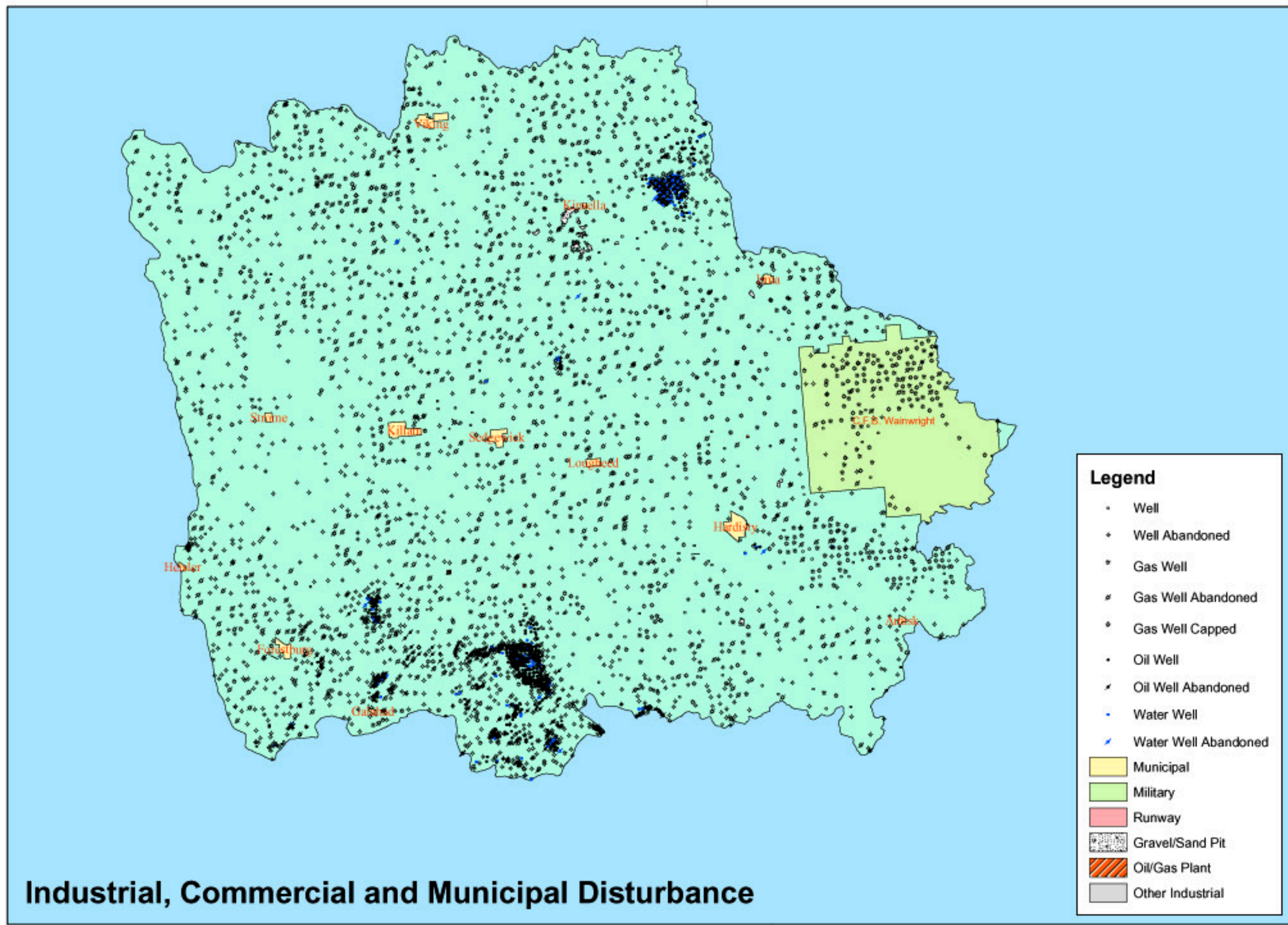
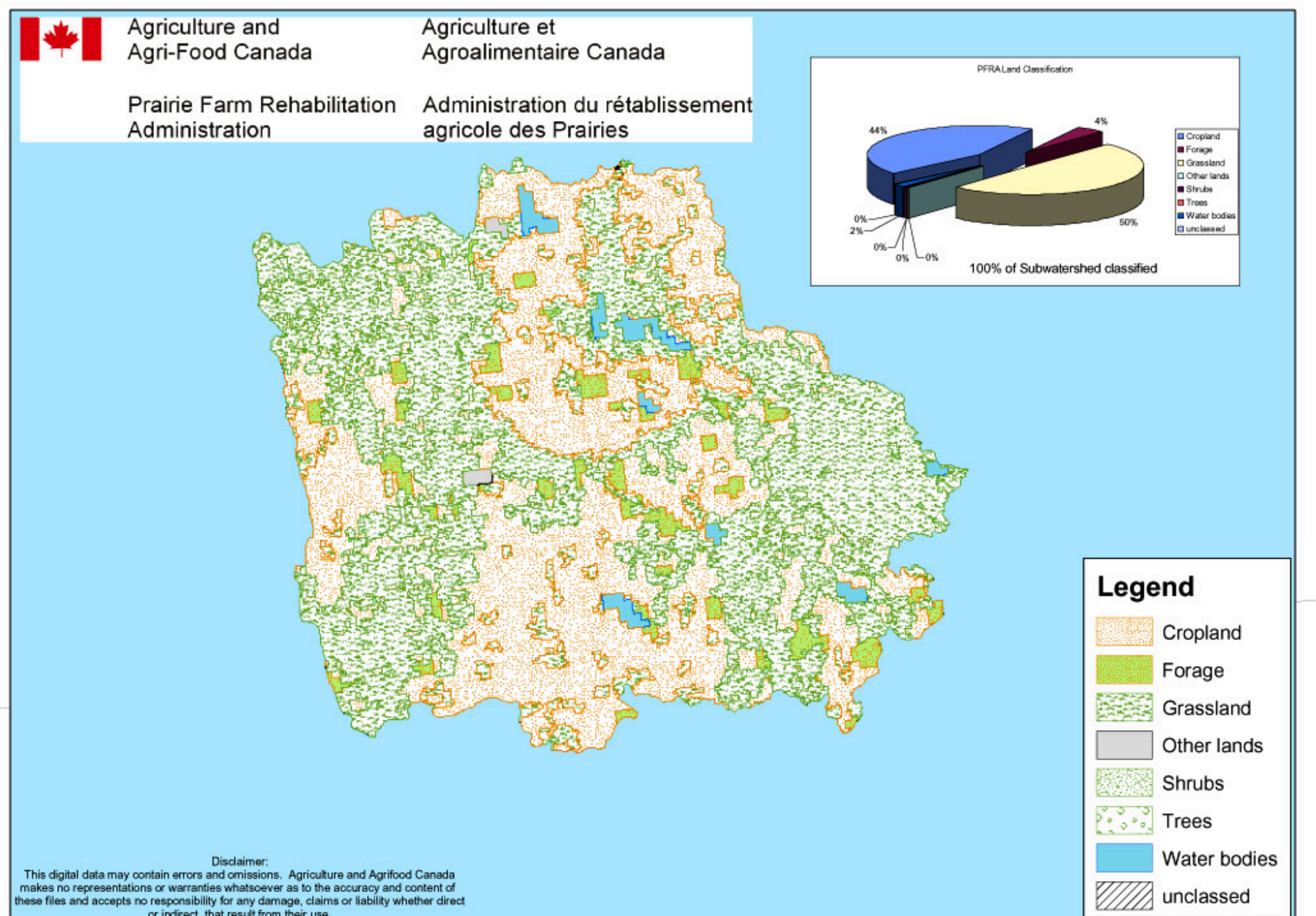
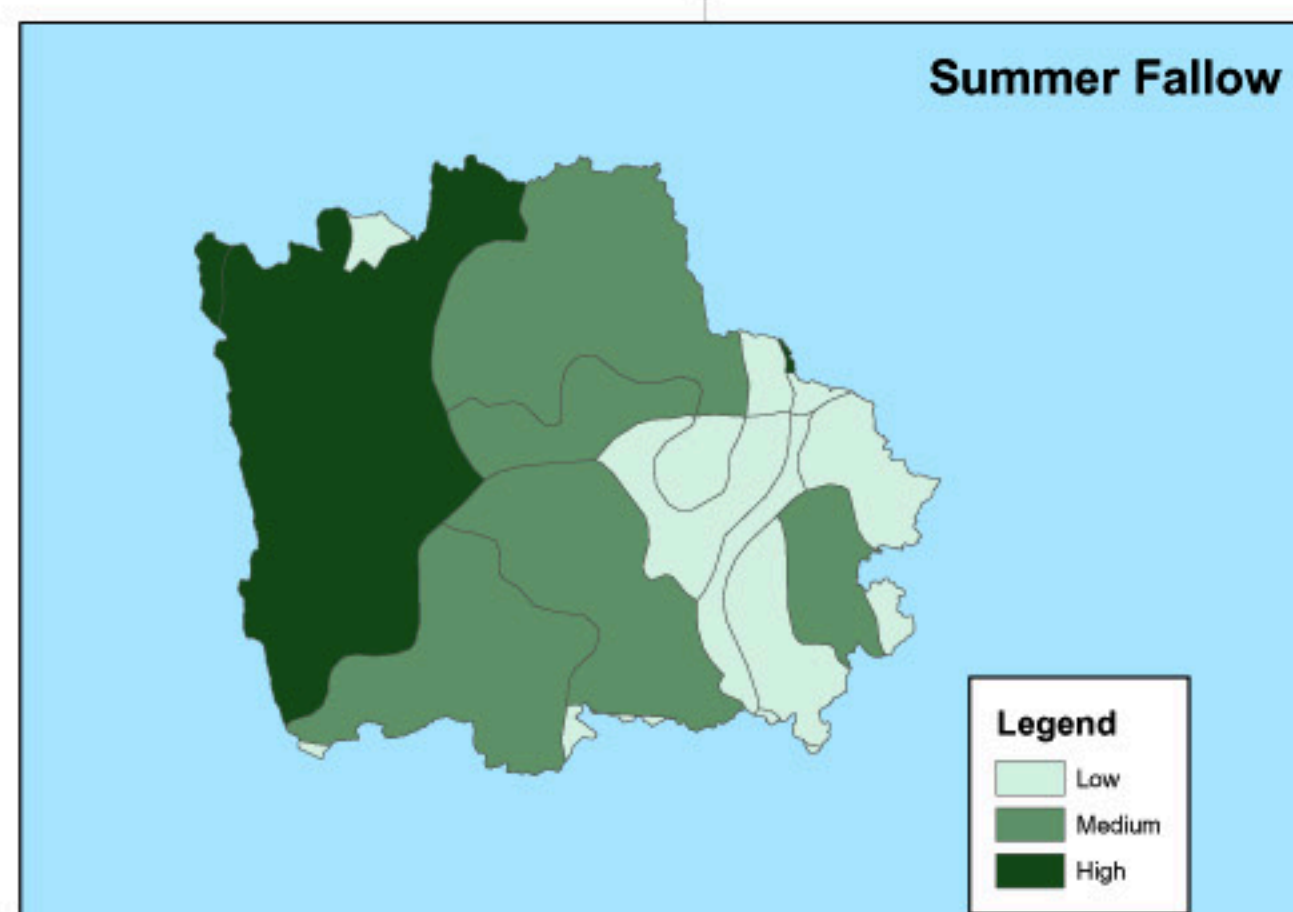
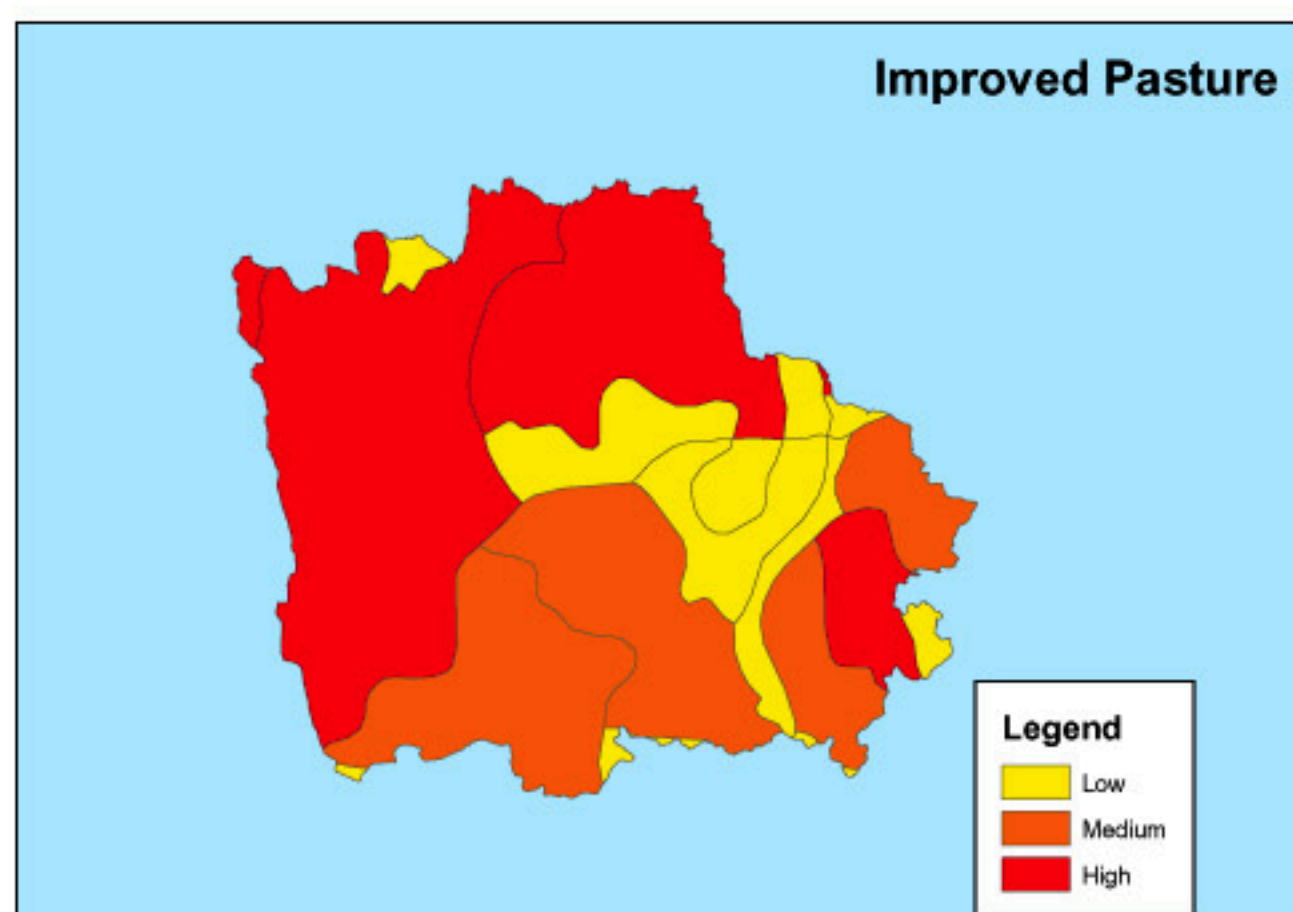
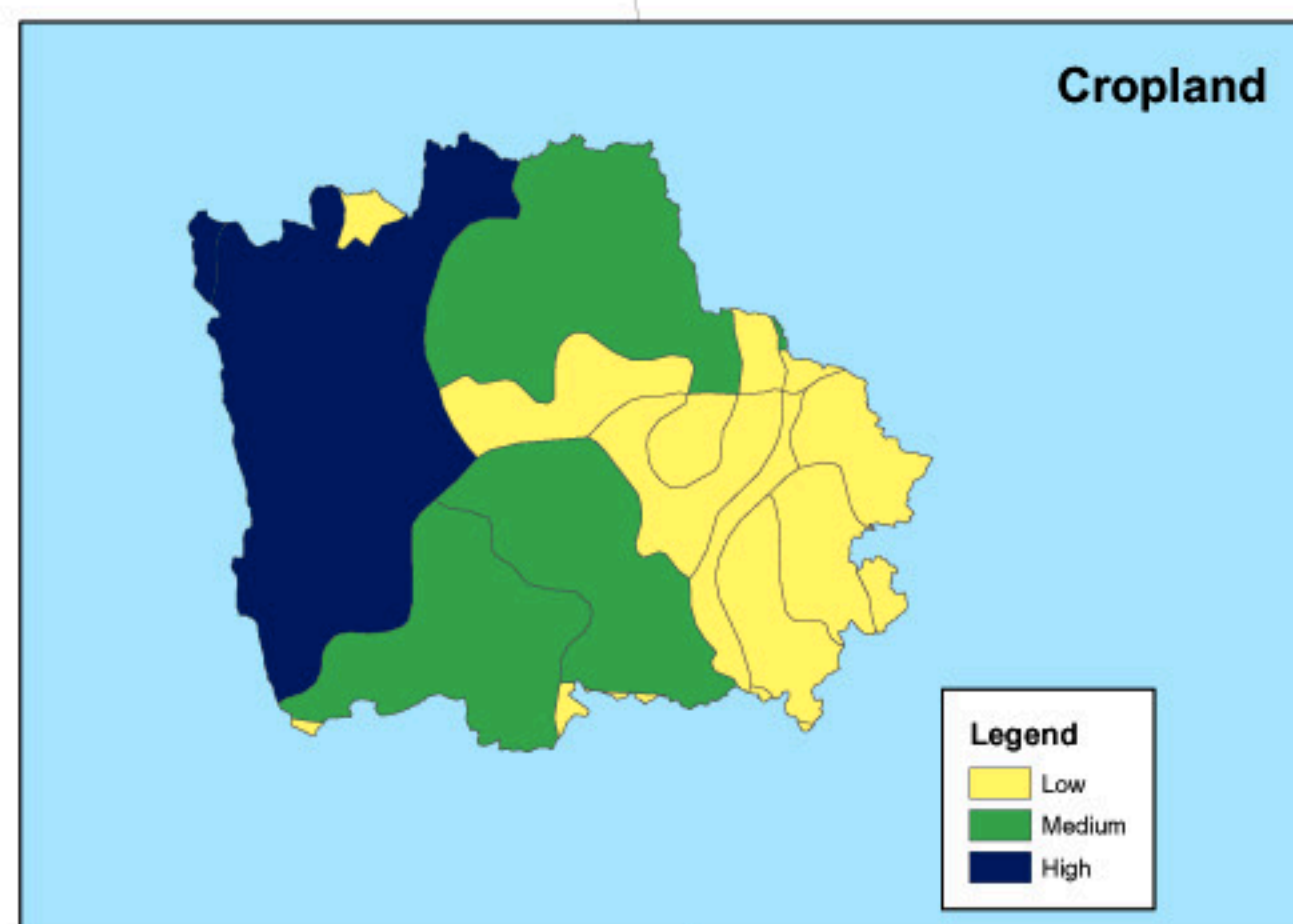
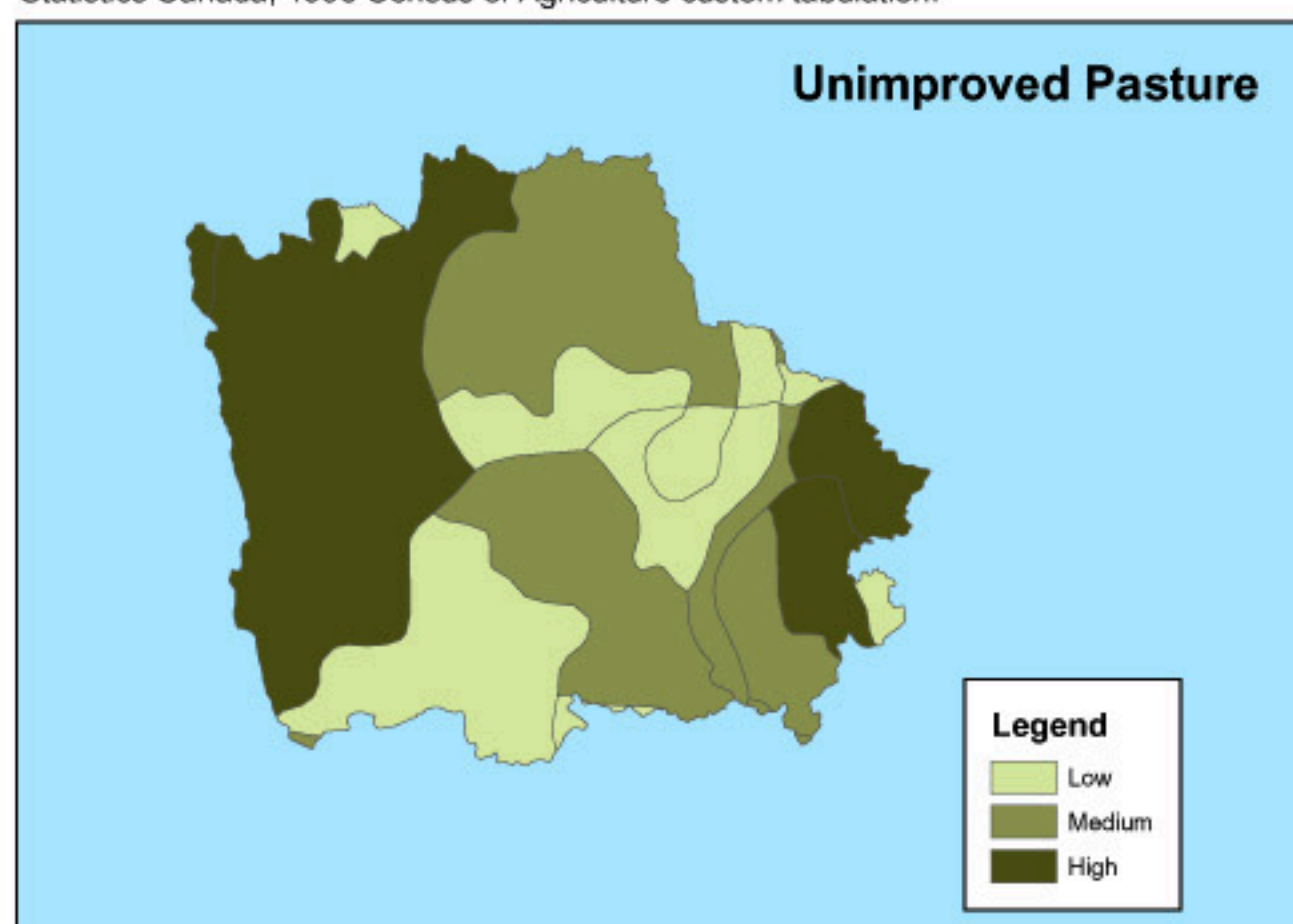


Iron Hydrological Overview



Hiley, J.C. and W. Lindwall, (October 1998). Land-based Census of Agriculture in Canada (as reprocessed by farm headquarters to the Soil Landscapes of Canada map, Version 1.9 in the Prairie Region with variable totals from the 1996 Census). [Diskette]. Based on: Statistics Canada, 1996 Census of Agriculture custom tabulation.



Disclaimer: This digital data may contain errors and omissions. Agriculture and Agri-Food Canada makes no representations or warranties whatsoever as to the accuracy and content of these files and accepts no responsibility for any damage, claims or liability whether direct or indirect, that result from their use.

Iron Subwatershed
UTM Zone 11, Datum NAD83

Map created: April 13, 2004
Created By: Paul Elliott
Timberline Forest Inventory Consultants